

STEAMIST®

AudioSense "Invisible" Speaker Instructions

Model: TSS-IN

Installation Instructions

NOTE: To be used in conjunction with the AudioSense option (TSMC or TSMU). See separate Pub# 206.

IMPORTANT: If the material is too dense the transducers will not work properly. Thickness of tile should be no more than 1/2".

1. Select a suitable location to mount the transducers. Future access for service should be considered. When the ceiling above the steam room is an unfinished attic space this is an ideal location. This will minimize the sound penetrating the adjacent rooms and provide future access. The speakers are intended to be installed behind the shower surface out of sight.
2. Speakers should be mounted on opposite sides of the room. Center between the joist/studs (See Figure 3).
3. Remove adhesive liner from speaker and attach it to the cement board between the joist/studs. Repeat for second speaker on opposite side of the room.
4. Route speaker wires to the TSMC or TSMU Control Module. The positive speaker leg is red and the negative speaker leg is black.
5. Test speakers before closing walls.

NOTE: Transducers are designed to transfer energy to the surfaces they are mounted to and must be mounted to inside the wall cavity.

Figure 1

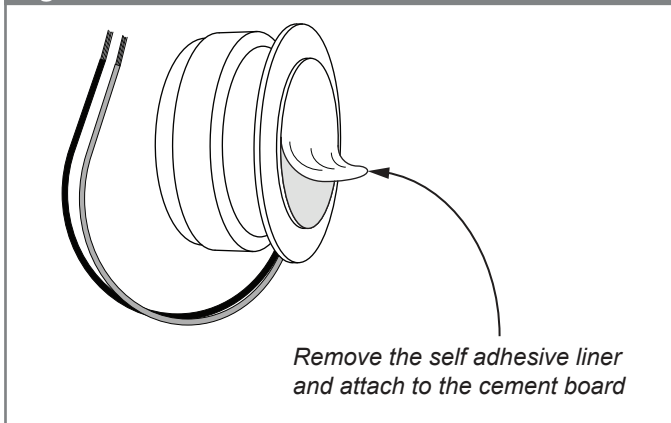
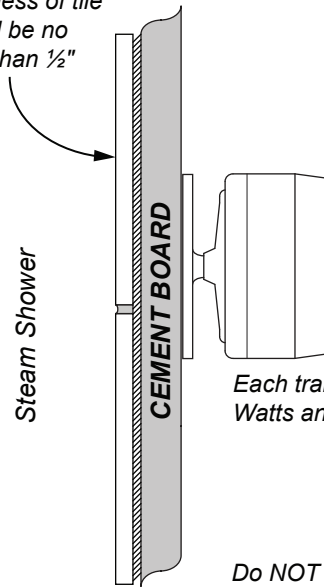


Figure 2

Thickness of tile should be no more than 1/2"



Each transducer is 50 Watts and 6 Ohms.

Do NOT mount directly to tile.

Figure 3

Right or Left channel shown. Separate the right and left channel to opposite ends of the room.

